



Coronavirus

Protection against infection in road freight transport

Information for companies with driving personnel

EN



As little contact with other people as possible: social distancing is the best way to protect against infection. For driving personnel, it is of course very difficult to always maintain the required minimum distance of 1.5 m or to work from home. This makes it all the more important to reduce personal contact with others to a minimum and to consistently adhere to the basic rules of infection control.

Enabling contactless working

- When coordinating with the consignors and consignees of goods, make sure that your drivers do not have to come into personal contact with others. Inform your employees about appropriate protective measures, such as in-trays and out-trays for freight documents and contactless modified work processes at loading ramps.
- Ensure that contact between driving personnel and other employees

Best practice

A general cargo cooperative has the recipients of the shipment sign the package or the address label. The driver then takes a photo each of the signed label and the delivered shipment.

ees in the company after the end of the journey or before the start of the next journey is kept to an absolute minimum. This includes, for example, staggering the timing of shift changes and preventing meetings on the company premises.

Support infection protection of the driving personnel

- In general, thorough hand washing is an important part of personal hygiene and can protect against infection. Make sure that sufficient suitable hand hygiene facilities are available in the company.
- To protect your staff on the road, make sure that drivers have access to sanitary facilities. If companies do not want to grant external, po-

tentially infectious persons access to their own premises, running water, soap dispensers, and disposable towels should be provided as a bare minimum.

- For drivers, appropriate hand hygiene cannot always be guaranteed. In these cases, it may be appropriate to provide employees with a hand disinfectant - or a sufficiently large water canister and hand soap as well as disposable towels.
- To keep external contact to a minimum, it is advisable that drivers take provisions with them. Support your driving personnel by finding out where supply facilities and sanitary facilities are available on their route. With good hand hygiene and by keeping a sufficient distance from others, it is safe to use service stations and petrol station shops.

Cleaning contact surfaces in and on the vehicle

Vehicles that are alternately driven by several drivers should as a minimum be cleaned when changing the driving personnel:

- Make sure that operating elements, handles, and other surfaces are thoroughly cleaned with grease-dissolving household cleaners. Disposable cloths soaked in detergent or soapy water are ideal for this purpose and should be disposed of after use. Chemical disinfectants can be used as an alternative to cleaning with household detergents or soapy water – but they do not promise any additional benefit. The disinfectants should have at least some degree of virucidal effect.
- Ideally, textiles such as curtains or sheets should be dry cleaned. Alternatively, they can be cleaned in the washing machine with detergent and at 60° C. Subsequent ironing helps with disinfection. It should go without saying that drivers should use their own or personally assigned towels, sheets, and blankets, which should be washed after use.

Before the vehicle is used by others, the driver's cab should also be thoroughly ventilated.

Contact with loading equipment and freight containers

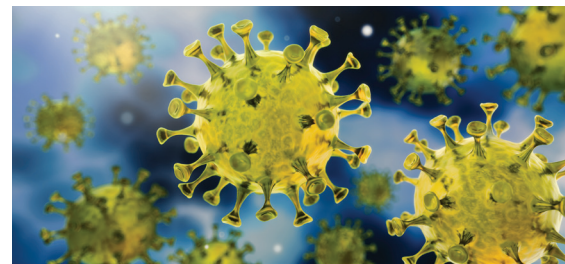
To date, no cases have been reported where infection has occurred through contact with transport packaging or goods.

In case of illness of employees

- If employees develop a fever, cough, or shortness of breath, they should consult a doctor – after making an appointment by telephone. They should also report to the responsible health authority and under no circumstances should they remain on the premises.
- Encourage drivers who have fallen ill while on the road to contact a doctor at the first sign of flu-like symptoms. Professional drivers can request the telephone numbers of partner doctors via the **Europe-wide hotline 00800 03627867** provided by DocStop für Europäer e.V. They should be contacted by phone first. After describing the symptoms, a decision will be made on how to proceed. If a coronavirus infection can be ruled out, the driver will be given an appointment. If there is a possibility of infection, the doctor will describe the subsequent procedure.

BG Verkehr
Directorate of Occupational Safety and Health
Ottenser Hauptstr. 54
22765 Hamburg
Germany

Tel.: +49 40 3980-0
E-Mail: praevention@bg-verkehr.de



Quick question

Which recommendations for infection protection should companies follow?

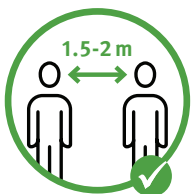
The regulations of the federal states and, if applicable, of the local authorities also apply to those insured with BG Verkehr. The BMAS occupational health and safety standard and its industry-related specification by BG Verkehr must be observed. In everyday work, company doctors and occupational safety specialists are qualified contact persons.

Current information from BG Verkehr
Industry-specific specification of the BMAS occupational safety standards:
www.bg-verkehr.de/coronavirus

Media from the DGUV (free of charge)
[Flyer: Coronavirus SARS-CoV-2 – \(Suspected\) cases of illness in the company](#)
[Poster: Coronavirus – General protective measures](#)

Further information
www.rki.de
www.infektionsschutz.de
www.docstop.eu

General protective measures



Maintain at least
1.5 m distance
from others!



Wash hands regularly and
thoroughly with **soap and**
water for **30 seconds!**



Cough and sneeze into
the **crook of your arm**,
not into your hand!