

Coronavirus

Protection against infection in the waste disposal industry

EN

Information concerning waste collection, waste sorting and waste treatment



Having as little contact with other people as possible is the best way to protect against infection. However, employees in the waste disposal industry cannot always maintain the required minimum distance of 1.5 m or work from home. This makes it all the more important to reduce personal contact with others to a minimum and to consistently adhere to the basic rules of infection control. Important contact persons on this matter are your company doctor and your occupational safety specialist.

Minimise contact with customers

- If possible, block access to operating areas or buildings for customers.
- Take precautions where contact with customers is necessary: distance regulations, marking distances in waiting areas, and extending opening hours make it possible to avoid crowd formation.
- During customer transactions, protection against contact for employees is advisable, e.g. by means of barriers or the installation of Plexiglas panels.
- By dispensing with signatures on documents and using cashless payment, contact can be minimised and infections avoided.

Reduce contact in-house

- Ensure to minimise contact between employees. The introduction of shift work or division into groups with staggered working hours may be possibilities.
- The company premises should only be entered immediately before work begins and then left immediately afterwards.
- Make sure that different teams or groups do not meet. This is especially important for the use of changing rooms and showers (dirty and clean areas).
- Make sure that changing clothes and personal hygiene (showering) after work is under no circumstances shifted home.
- To avoid direct contact, disposition should be equipped with spit protection (e.g. Plexiglas walls) if possible.

Protection against infection in waste treatment and sorting

- Ensure that sanitary facilities (if necessary also mobile sanitary facilities) with hand washing facilities are available for external personnel.
- Regularly clean touchscreens on automatic weighing equipment and provide, for example, input pens.
- If necessary, reduce the number of employees in sorting operations and increase the distances between them.
- Provide hand washing facilities close to the changing rooms. Increase the frequency of glove changes.

Protection against infection in waste collection

- In order to minimise the risk of infection, the loader in the collection area should generally ride on the running board. When travelling in the driver's cab, communication should be limited to the bare essentials. If possible, the conversation partners should turn away from each other to avoid the danger of droplet infection.
- With a 1+2 crew, the loaders should be rotated. During the journey to the unloading point, if this is at all necessary, only the signaler should come along.
- Refrain from the use of face masks in waste collection. The hygienic conditions during waste collection hold an increased risk of infection when masks are frequently put on and taken off.
- Gloves should always be removed before entering the cab and, if possible, not taken into the vehicle. Interior door handles should generally not be touched with gloves.
- Water containers with taps, liquid soap and disposable towels or wet/disinfectant wipes should be provided and used for hand cleaning on the road.

- When riding in the cab, the cab should be thoroughly ventilated as often as possible.

Cleaning contact surfaces in and on the vehicle

Waste collection vehicles that are driven alternately by different teams should be cleaned as follows:

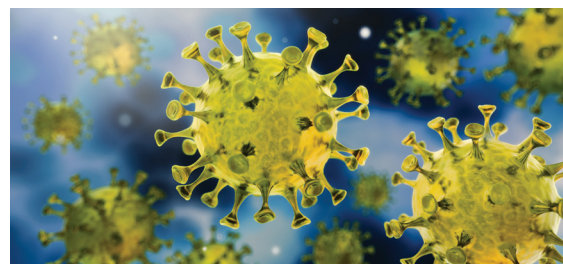
- Operating elements, handles and other surfaces should be cleaned thoroughly with a grease-dissolving household cleaner or washing-up liquid. This is more suitable for combating coronavirus than the use of pure disinfectants due to the additional mechanical effect.
- After cleaning, the cleaning water and cloth must be changed. If available, soaked disposable wipes are ideal, as they can then be disposed of directly.
- Before the vehicle is used by others, the driver's cab should also be thoroughly ventilated.

In case of illness of employees

Encourage workers who are ill to contact a doctor at the first sign of flu-like symptoms and to stay at home.

BG Verkehr
Directorate of Occupational Safety and Health
Ottenser Hauptstr. 54
22765 Hamburg
Germany

Tel.: +49 40 3980-0
E-Mail: praevention@bg-verkehr.de



Quick question

Which recommendations for infection protection should companies follow?

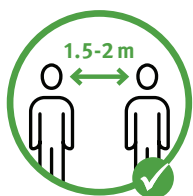
The regulations of the federal states and, if applicable, of the local authorities also apply to those insured with BG Verkehr. The BMAS occupational health and safety standard and its industry-related specification by BG Verkehr must be observed. In everyday work, company doctors and occupational safety specialists are qualified contact persons.

Current information from BG Verkehr
Industry-specific specification of the BMAS occupational safety standards:
www.bg-verkehr.de/coronavirus

Media from the DGUV (free of charge)
[Flyer: Coronavirus SARS-CoV-2 – \(Suspected\) cases of illness in the company](#)
[Poster: Coronavirus – General protective measures](#)

Further information
www.bmas.de
www.rki.de
www.infektionsschutz.de

General protective measures



Maintain at least
1.5 m distance
from others!



Wash hands regularly and
thoroughly with **soap and**
water for **30 seconds!**



Cough and sneeze into
the **crook of your arm**,
not into your hand!